

MICRO SWITCH
a Honeywell Division

FED. MFG. CODE 91929

**LINEAR OUTPUT HALL
EFFECT TRANSDUCER**

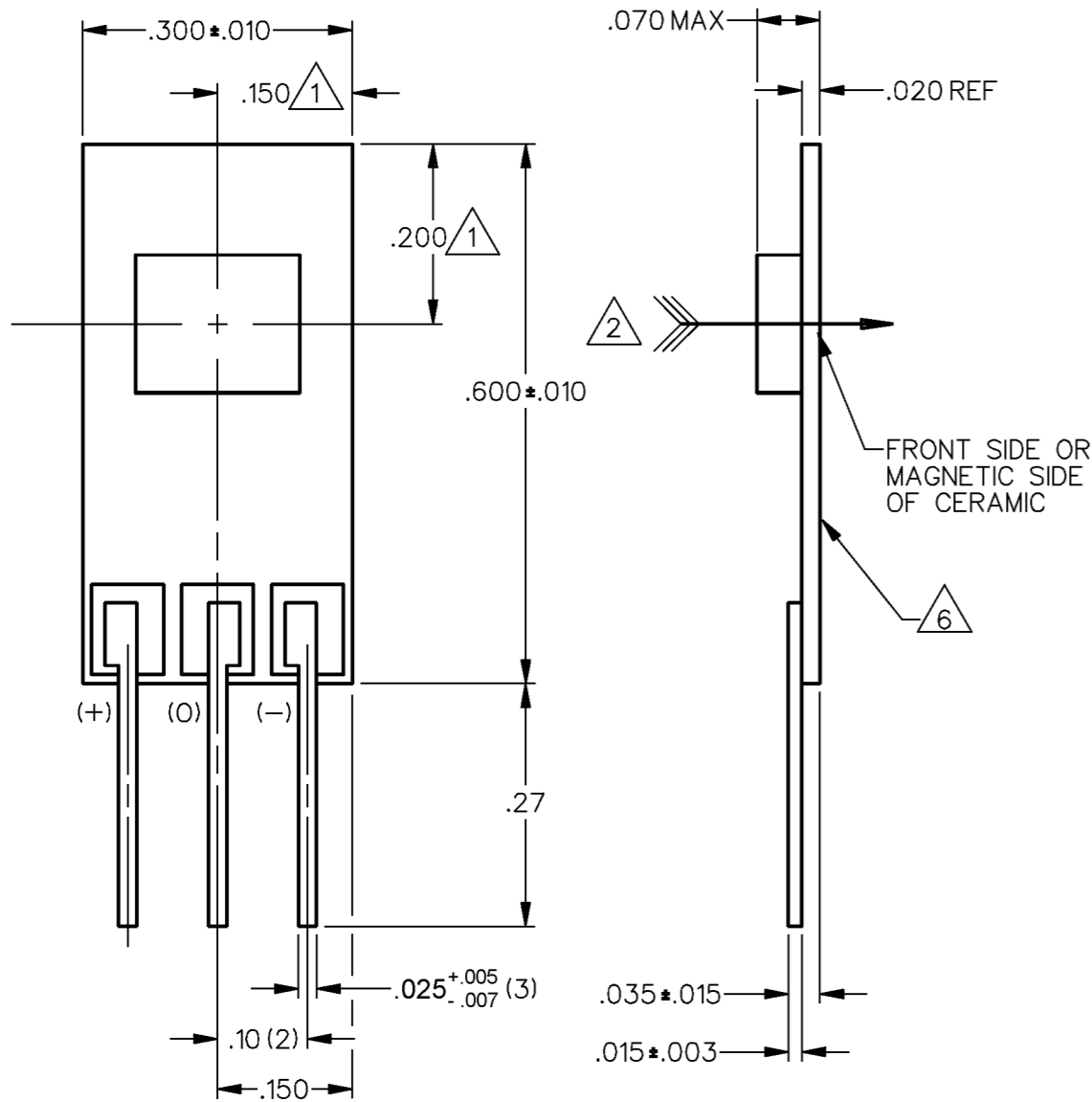
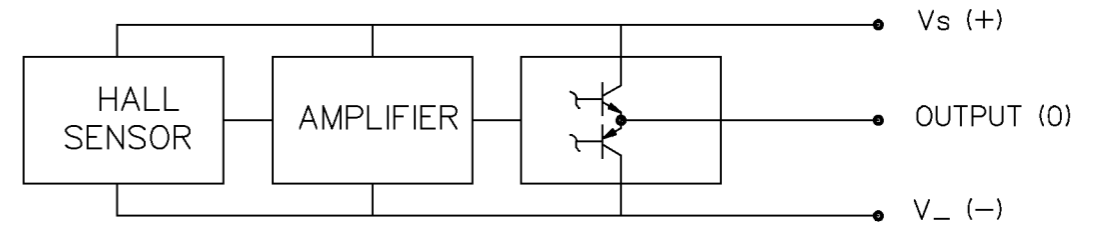
CATALOG LISTING
SS94A2C

THIS DRAWING COVERS A PROPRIETARY ITEM AND IS THE PROPERTY OF MICRO SWITCH. A DIVISION OF HONEYWELL. THIS DRAWING IS NOT TO BE COPIED OR USED WITHOUT THE APPROVAL OF MICRO SWITCH

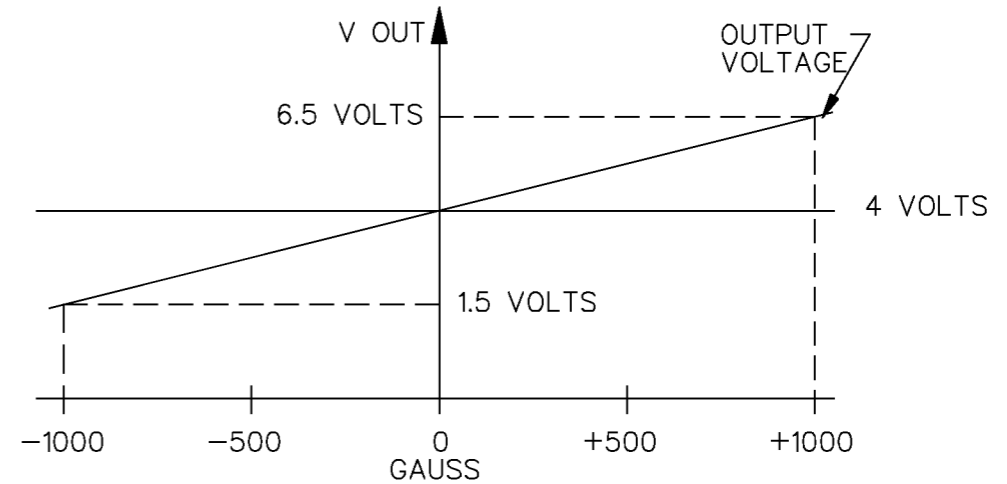
OPERATING CHARACTERISTICS

PARAMETER	MIN	TYP	MAX	UNITS	CONDITIONS/REMARKS
SUPPLY VOLTAGE	6.6	8.0	12.6	VOLTS	-40°C TO +125°C
SUPPLY CURRENT		13	30	mA	MAX @ 12.6 V @ -40°C
OUTPUT CURRENT			1	mA	SINKING OR SOURCING
OUTPUT SPAN		.625 V _S		VOLTS	-1000G TO +1000G @ 25°C ∇ 5
SENSITIVITY	2.45	2.50	2.55	mV/g	@ 8.0 V _S & 25°C
LINEARITY	-1.5	-.8	0	% OF SPAN	DEV FROM STR LINE THRU -1000 AND +1000
V _{OUT} @ 0 GAUSS	3.960	4.000	4.040	VOLTS	25°C
TEMP ERROR-NULL	-.0125		+.0125	%/°C	-40°C TO +125°C
TEMP ERROR-GAIN	-.02		+.02	%/°C	-40°C TO +125°C

BLOCK DIAGRAM CURRENT SINKING OR SOURCING OUTPUT



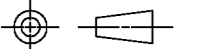
NOMINAL TRANSFER CHARACTERISTICS AT 8.0 VDC



NOTES

- 1 CENTERLINE OF HALL CELL (IC) ONLY. THE LOCATION OF THE CERAMIC COVER IS NOT SPECIFIED
- 2 THE + MAGNETIC FLUX IS IN THIS DIRECTION (THIS ASSUMES THE CONVENTION THAT THE DIRECTION OF THE EXTERNAL FLUX OF A MAGNET IS FROM THE NORTH TO THE SOUTH POLE OF THE MAGNET)
- 3 - THE DEVICE CANNOT BE DAMAGED BY MAGNETIC OVERDRIVE
- 4 - OUTPUT TYPE - RATIOMETRIC
- 5 THE OUTPUT IS CLAMPED AT 9.0 VDC MINIMUM, 9.5 VDC TYPICAL
- 6 THIS SIDE COATED WITH CONDUCTIVE MATERIAL WHICH IS ELECTRICALLY CONNECTED TO (-) TERMINAL

THIRD ANGLE PROJECTION



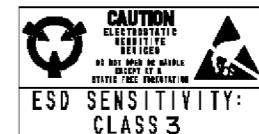
SCALE 5 : 1

DO NOT SCALE PRINT

UNLESS OTHERWISE SPECIFIED TOLERANCES ARE

ONE PLACE (.0) ±.030
TWO PLACE (.00) ±.015
THREE PLACE (.000) ±.005
ANGLES ±

WEIGHT



CATALOG LISTING
SS94A2C
PAGE 1 OF 1

ISSUE
M
6

REVISIONS

A	C072441	J A S	19 MAY 92
B	C073769	K A G	10 NOV 92
C	C0795704	DLM	21 MAR 00
D	0038690	PRS	14 APR 08
E	0039911	SS	19 MAY 08

RASTER
DRAWN

RELEASE NO. PR-16879
REPLACES X89999-SS
CHECK BLR 19MAY08
CHECK T M M 26 JAN 89
CHECK T M M 18 JAN 89